

Buzzer Description

Two short beeps: Operation succeeded

Three short beeps: Operation failed

Rapid short beeps: Entry delay

Slow short beeps: Exit delay

Repeated sound effects: Fire alarm/Medical alarm/Panic alarm/Lid opened alarm

3 Enrollment

1. Remove the screw on the bottom of the keypad.
2. Disassemble the keypad and remove the rear panel.
3. Power on the security control panel.
4. Download and install APP.
4. Log in APP and tap the icon "+". Scan the QR code or enter the control panel serial No. to add the control panel.
5. Enroll the peripheral locally, with OR code, or with serial No..

Enroll the Peripheral Locally

1. In the APP, tap the "Enrollment Mode" button on the control panel page to make the control panel enter the enrollment status.

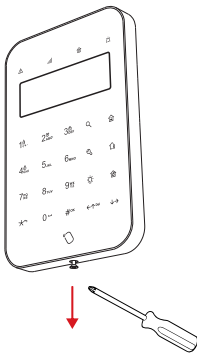
2. Push the power switch of the peripheral to ON, and it will be automatically enrolled to the control panel.

Note: when the keypad has been enrolled to the control panel A, if there is a control panel B in the enrollment mode around when the power is turned on, the keypad will enroll to the control panel B.

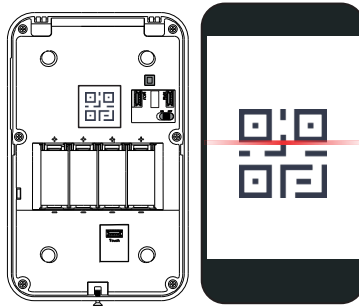
Enroll the Peripheral with QR Code or Serial No.

1. In the APP, tap the icon "+" and scan the QR code or enter the serial No. on the peripheral.

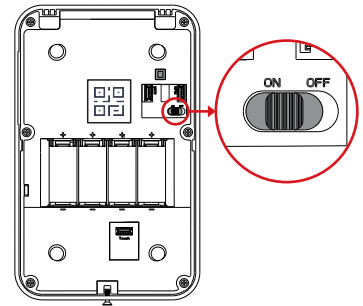
2. Push the power switch of the peripheral to ON, and it will be automatically enrolled to the control panel.



Remove the screw on the bottom of the keypad. Disassemble the keypad and remove the rear panel.



Scan the QR code on the rear panel of the keypad.



Push the power switch to ON.

4 Installation

Note: The additional force shall be equal to three times the weight of the equipment but not less than 50N. The equipment and its associated mounting means shall remain secure during the installation. After the installation, the equipment, including any associated mounting plate, shall not be damaged.

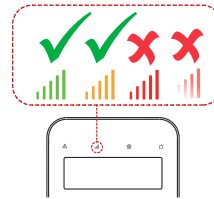
Check signal strength and select installation place

Enter the signal checking mode by operating on the control panel.

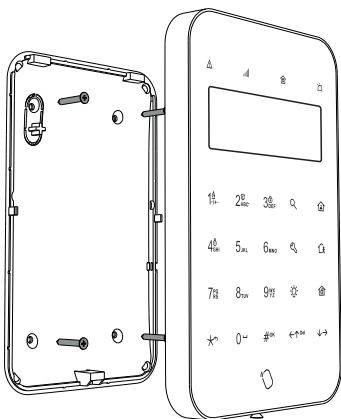
Signal LED flashes green: Strong.

Signal LED flashes orange: Medium.

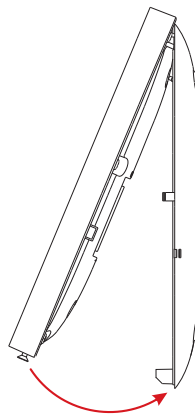
Signal LED flashes red: Weak/Disconnected.



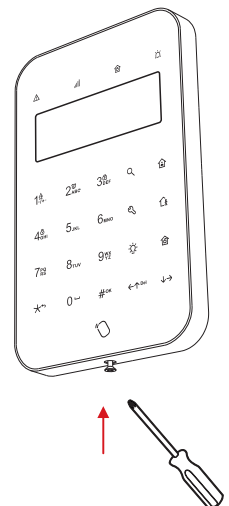
CAUTION
IF THE BATTERY COMPARTMENT DOES NOT CLOSE SECURELY, STOP USING THE PRODUCT AND KEEP IT AWAY FROM CHILDREN.



1. Secure the rear panel on the wall with four supplied screws.



2. Attach the front panel onto the rear panel.



3. Tighten the screw on the bottom to complete.

5 Command

The keypad command is shown as follows. A short tag swiping (<3 s) is equal to a password.

Events		Codes	Notes
Arm	Away arm	Password/Tag +	
	Stay arm	Password/Tag +	
	Area away arm	Password/Tag + # + Area No. +	
	Area stay arm	Password/Tag + # + Area No. +	
Disarm	Disarm	Password/Tag +	1. When the area is selected, the corresponding page will be displayed. 2. Duress passwords can be configured on the control panel.
	Area disarm	Password/Tag + # + Area No. +	
	Duress password disarm	Duress password +	
Silence	Silence	Password/Tag + (Hold ≥3 s)	
Alarm	Fire alarm	(Hold ≥3 s)	
	Panic alarm	(Hold ≥3 s)	
	Medical alarm	(Hold ≥3 s)	
Lock	Lock/Unlock keypad	Hold (≥3 s) to lock the keypad for 60 s. Hold (≥3 s) again or wait 60 s to unlock.	
Relay	Relay output	1. Password/Tag + to enter the relay selection page 2. Use # to select/cancel the relay 3. Use to confirm	
Settings	Settings	Password/Tag +	Only the administrator and the installer have this permission.
Query	Query fault	1. Password/Tag + 2. Use # to confirm	Only the administrator and the installer and operators have this permission.
One-push Arm	One-push Arm	After enabled, the keypad can be armed with or	The one-push arming is configured on the web client or APP of the control panel. The one-push arming does not require area selection.
Delete	Backspace	(Short press) Del	
	Delete all	(Hold ≥3 s) Del	

Arming Process (Enabled/Disabled on Control Panel)

Pre-arming

Indication:

The keypad displays "Waiting for arming"
The fault LED turns solid orange

Fault Checking

Indication:

All faults of the control panel and the zones to be operated will be displayed. You need to use scroll keys to view all faults before next operation.

- Away arming: Confirm by
- Stay arming: Confirm by
- Cancel:

The fault LED turns flashing orange

Exit Delay

Indication:

The keypad displays "Exit delay"
The arming LED turns flashing blue and the buzzer indicates exit delay.

Arm Directly

Press the or to arm the device.

Indication:

Armed: arming LED solid blue for 5 s. Buzzer beeps twice.
Arming failed: Buzzer beeps three time.

Cancel

Press the to cancel the arming process.

Indication:

Armed: Buzzer beeps twice.
Arming failed: Buzzer beeps three time.

No Instant Operation

The count down is finished.

Indication:

Armed: arming LED solid blue for 5 s. Buzzer beeps twice.
Arming failed: Buzzer beeps three time.

Reset

Hold the **Tamper Switch** and turn on the power until the LED flashes red 3 times.

Simple Mode

Arm

The keypad is **diarmed**.

A short tag swiping (<3 s) to away arm.

A long tag swiping (≥3 s) to stay arm.

Disarm

The keypad is **armed**.

A short tag swiping (<3 s) to disarm.

Note:

1. A single swiping interval needs to be longer than 3 s. Multiple swipings within 3 s count as one time.
2. Simple mode does not support arming process.

Settings

User Management: Add/Edit/Delete users.

Tag Management: Add/Edit/Delete tags.

Restore Alarm: Confirm alarm or restore tamper of the control panel. (Only when the control panel supports and enables PD6662. Only installer has this permission.)

Company/Telephone: Edit company name and telephone number.

Control Panel Lock/Unlock: One-push to lock or unlock the control panel. (Only installer has this permission.)

Bypass/Restore Bypass: Bypass/Restore bypass zones.

6 Specification

The keypad technical specification is shown as follows.

Model		WE Series	WB Series
RF	Wireless technology	Tri-X, two-way communication	
	RF frequency	868 MHz	433 MHz
	RF modulation	2GFSK	
	RF distance	1200 m (open area)	800 m (open area)
Interface	LED indicator	Fault (orange), enrollment/signal (red/green), arm (blue), disarm (green), alarm (red)	
	Buzzer	Supported	
	Power switch	Power on/off	
	Tamper-proof	Supported, front and rear	
	Serial port	3	
	Tag reader built-in	Supported	
LCD Display	Numeric key	Number key: 0 to 9 Function key: *, #, query, away arm, stay arm, disarm, output, settings, right, left	
	System fault display	Supported	
	System status display	Supported	
	Operation	Supported	
Electrical & Battery	Configuration	Supported	
	Power consumption	Quiescent current: 80 uA Max current: 300 mA Voltage: 3 V	
	Battery type	Four CR123 batteries	
Other	Battery life span	Standby time more than two years	
	Operation temperature	-10°C to 55°C	
	Operation humidity	10% to 90%	
	Color	White	
	Installation method	Wall-mounting	
	Dimension (W × H × D)	174.63 mm × 109.62 mm × 25.25 mm	
Weight	Weight	With batteries: 348 g Without batteries: 282 g	