



# TX-5DS Wireless Magnet Shock Detector Quick Start Guide

## English

### 1 APPEARANCE

- 1.Magnet
- 2.Positioning line
- 3.Indicator
- 4.Tamper Button
- 5.Power Switch
- 6.External Inputs
- 7.Battery
- 8.Shock Sensor

### 2 ENROLLMENT

### 3 TEST

Check if the installation position is properly.  
I. Magnet Test

Magnet Detection Performance Table

Axes of Operation	Event	Without Nominal Distance	
		Distance in Air	Distance in Air
X+	Remove	11	14
	Approach	12	12
X-	Remove	11	15
	Approach	10	12
Y	Remove	35	30
	Approach	28	23
Z+	Remove	48	46
	Approach	40	38
Z-	Remove	41	38
	Approach	32	30

### II. Shock Test

Sensitivity	Suggested scenarios
High	Concrete
Normal	Wood
Low	Window

### III. Tilt Test

You can set the tilt angle (5° to 25°) in the mobile client software.  
**Note:** The tilt detection is only applicable to horizontal or vertical scenes. The tilt angle is perpendicular to the geocentric direction as the reference standard.

### 4 INSTALLATION

I. Check signal strength and align the positioning line.

II. Detection Area for Different Material

- a. Glass
- b. Wood
- c. Concrete

III. Install the detector.

a. with screw

b. with sponge tape (non EN compliant)

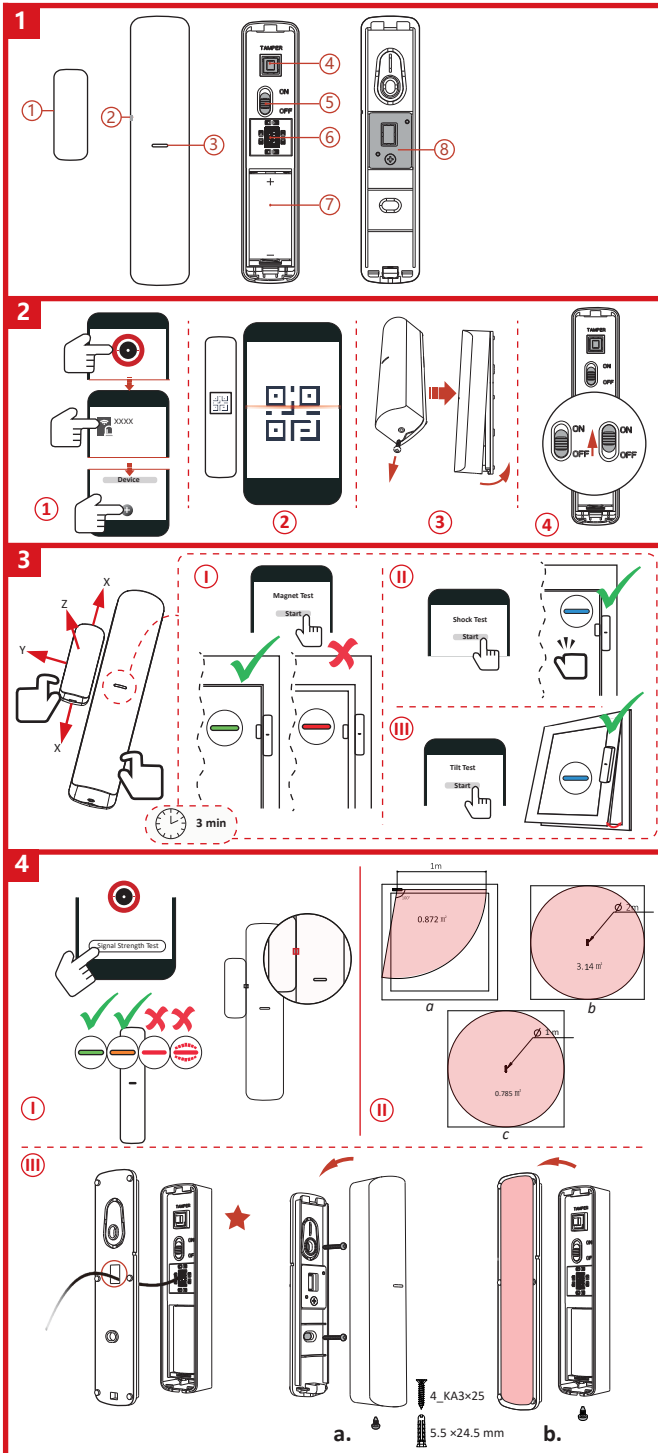
(optional) route the cable through cable hole if external inputs required.

**Note:** Installation with sponge tape is not recommended if shock detection enabled.

**Warning:** The actual wireless range may vary on different mounting surface, try avoiding metal surface on installation.

## Specification

Detection gap	According to the magnet detection performance table
External inputs	2
Shock detection	Yes
Tilt detection	Up to 25°
LED indicator	Green (MC), Orange (tilt), Red (shock), Blue (alarm)
Operating temperature	-10 °C to 55 °C (14 °F to 131 °F)
Storage temperature	-10 °C to 40 °C (14 °F to 104 °F) Certified
Operating humidity	10% to 90%
Dimension (H × W × D)	Sensor: 22.5 mm × 103 mm × 23.2 mm Magnet: 13 mm × 34.4 mm × 11.4 mm
Weight	60 g
Transmission frequency	868 MHz
RF range	1.6 km (open area)
Battery	CR123A × 1 (included), 3VDC, Max.1600mAh, Min. 900mAh
Standard battery life	3 years
PS Type	Type C
Current	Max. current: 70mA Quiescent current: 33.3uA
Voltage Range	Fully charged (new) to 2.65 VDC (battery)
Low voltage value	2.65 V



©2021 Complexion All rights reserved.

About this Manual

The Manual includes instructions for using and managing the Product. Pictures, charts, images and all other information hereinafter are for description and explanation only. The information contained in the Manual is subject to change, without notice, due to firmware updates or other reasons.

Disclaimer

TO THE MAXIMUM EXTENT PERMITTED BY APPLICABLE LAW, THIS MANUAL AND THE PRODUCT DESCRIBED, WITH ITS HARDWARE, SOFTWARE AND FIRMWARE, ARE PROVIDED "AS IS" AND "WITH ALL FAULTS AND ERRORS". COMPLEXION MAKES NO WARRANTIES, EXPRESS OR IMPLIED, INCLUDING WITHOUT LIMITATION, MERCHANTABILITY, SATISFACTORY QUALITY, OR FITNESS FOR A PARTICULAR PURPOSE. THE USE OF THE PRODUCT BY YOU IS AT YOUR OWN RISK. IN NO EVENT WILL COMPLEXION BE LIABLE TO YOU FOR ANY SPECIAL, CONSEQUENTIAL, INCIDENTAL, OR INDIRECT DAMAGES, INCLUDING, AMONG OTHERS, DAMAGES FOR LOSS OF BUSINESS PROFITS, BUSINESS INTERRUPTION, OR LOSS OF DATA, CORRUPTION OF SYSTEMS, OR LOSS OF DOCUMENTATION, WHETHER BASED ON BREACH OF CONTRACT, TORT (INCLUDING NEGLIGENCE), PRODUCT LIABILITY, OR OTHERWISE, IN CONNECTION WITH THE USE OF THE PRODUCT, EVEN IF COMPLEXION HAS BEEN ADVISED OF THE POSSIBILITY OF SUCH DAMAGES OR LOSSES.

YOU ACKNOWLEDGE THAT THE NATURE OF THE INTERNET PROVIDES FOR INHERENT SECURITY RISKS, AND COMPLEXION SHALL NOT TAKE ANY RESPONSIBILITIES FOR ABNORMAL OPERATION, PRIVACY LEAKAGE OR OTHER DAMAGES RESULTING FROM CYBER-ATTACK, HACKER ATTACK, VIRUS INFECTION, OR OTHER INTERNET SECURITY RISKS; HOWEVER, HIKVISION WILL PROVIDE TIMELY TECHNICAL SUPPORT IF REQUIRED.

YOU AGREE TO USE THIS PRODUCT IN COMPLIANCE WITH ALL APPLICABLE LAWS, AND YOU ARE SOLELY RESPONSIBLE FOR ENSURING THAT YOUR USE CONFORMS TO THE APPLICABLE LAW.

ESPECIALLY, YOU ARE RESPONSIBLE, FOR USING THIS PRODUCT IN A MANNER THAT DOES NOT INFRINGE ON THE RIGHTS OF THIRD PARTIES, INCLUDING WITHOUT LIMITATION, RIGHTS OF PUBLICITY, INTELLECTUAL PROPERTY RIGHTS, OR DATA PROTECTION AND OTHER PRIVACY RIGHTS. YOU SHALL NOT USE THIS PRODUCT FOR ANY PROHIBITED END-USES, INCLUDING THE DEVELOPMENT OR PRODUCTION OF WEAPONS OF MASS DESTRUCTION, THE DEVELOPMENT OR PRODUCTION OF CHEMICAL OR BIOLOGICAL WEAPONS, ANY ACTIVITIES IN THE CONTEXT RELATED TO ANY NUCLEAR EXPLOSIVE OR UNSAFE NUCLEAR FUEL-CYCLE, OR IN SUPPORT OF HUMAN RIGHTS ABUSES.

IN THE EVENT OF ANY CONFLICTS BETWEEN THIS MANUAL AND THE APPLICABLE LAW, THE LATTER PREVAILS.



- Risk of explosion if the battery is replaced by an incorrect type.
- Improper replacement of the battery with an incorrect type may defeat a safeguard (for example, in the case of some lithium battery types).



- Do not dispose of the battery into fire or a hot oven, or mechanically crush or cut the battery, which may result in an explosion.
- Do not leave the battery in an extremely high temperature surrounding environment, which may result in an explosion or the leakage of flammable liquid or gas.
- Do not subject the battery to extremely low air pressure, which may result in an explosion or the leakage of flammable liquid or gas.



This product and - if applicable - the supplied accessories too are marked with "CE" and comply therefore with the applicable harmonized European standards listed under the RE Directive 2014/53/EU, the EMC Directive 2014/30/EU, the RoHS Directive

2011/65/EU.

2012/19/EU (WEEE directive): Products marked with this symbol cannot be disposed of as unsorted municipal waste in the European Union. For proper recycling, return this product to your local supplier upon the purchase of equivalent new equipment, or dispose of it at designated collection points. For more information see: [www.recyclethis.info](http://www.recyclethis.info)



2006/96/EC (battery directive): This product contains a battery that cannot be disposed of as unsorted municipal waste in the European Union. See the product documentation for specific battery information. The battery is marked with this symbol, which may include lettering to indicate cadmium (Cd), lead (Pb), or mercury (Hg). For proper recycling, return the battery to your supplier or to a designated collection point. For more information see: [www.recyclethis.info](http://www.recyclethis.info)

In the use of the product, you must be in strict compliance with the electrical safety regulations of the nation and region.

### BATTERY CAUTION

#### CAUTION:

- + identifies the positive terminal(s) of equipment which is used with, or generates direct current.
- identifies the negative terminal(s) of equipment which is used with, or generates direct current.

### INSTALLATION CAUTION

- Install the equipment according to the instructions in this manual.
- To prevent injury, this equipment must be securely attached to the floor/wall in accordance with the installation instructions.
- The additional force shall be equal to three times the weight of the equipment but not less than 50N. The equipment and its associated mounting means shall remain secure during the installation.
- After the installation, the equipment, including any associated mounting plate, shall not be damaged.
- No naked flame sources, such as lighted candles, should be placed on the equipment.

More Languages